

Notes on Improvements to latest Gauteng Weekly Dashboard Reporting Template:

The PWSG weekly dashboard has changed:

- The water demand table (previously Item 1) and graph (previously Item 2) have been merged into the demand graph for the three metros and Emfuleni. This was done to provide space to introduce the reservoir storage levels on the one-page dashboard, as Item 2.
- The reservoir storage levels impact on water availability in Gauteng and is thus of interest to water users. A level of >60% of overall storage is required to reliably serve all areas. Reservoir levels are impacted by increased water usage, typically during hot, dry weather, and when economic activity increases, resulting in flow out of reservoirs exceeding the volume of water available to replenish the reservoirs.

Kindly scroll to page 2 for the latest dashboard.

We will continue to develop the content of the dashboard and aim to introduce new information relevant to the public need whenever possible.

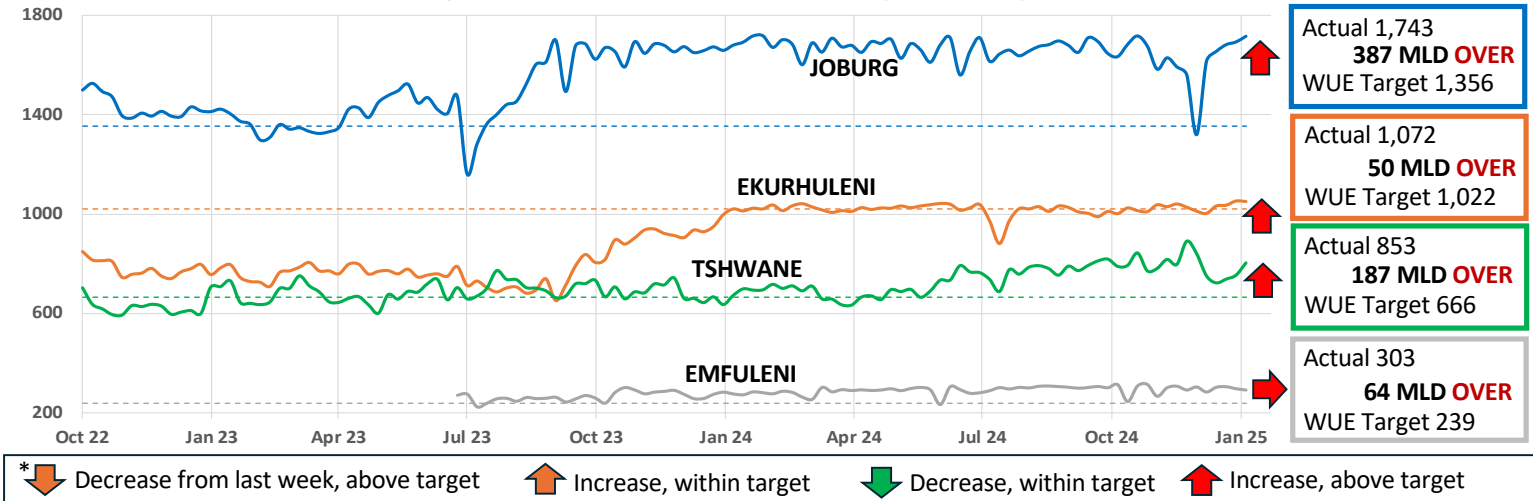
We again encourage and remind all readers to provide feedback or suggestions for improvement to pwsg@dws.gov.za.

Kind regards,

PWSG Team

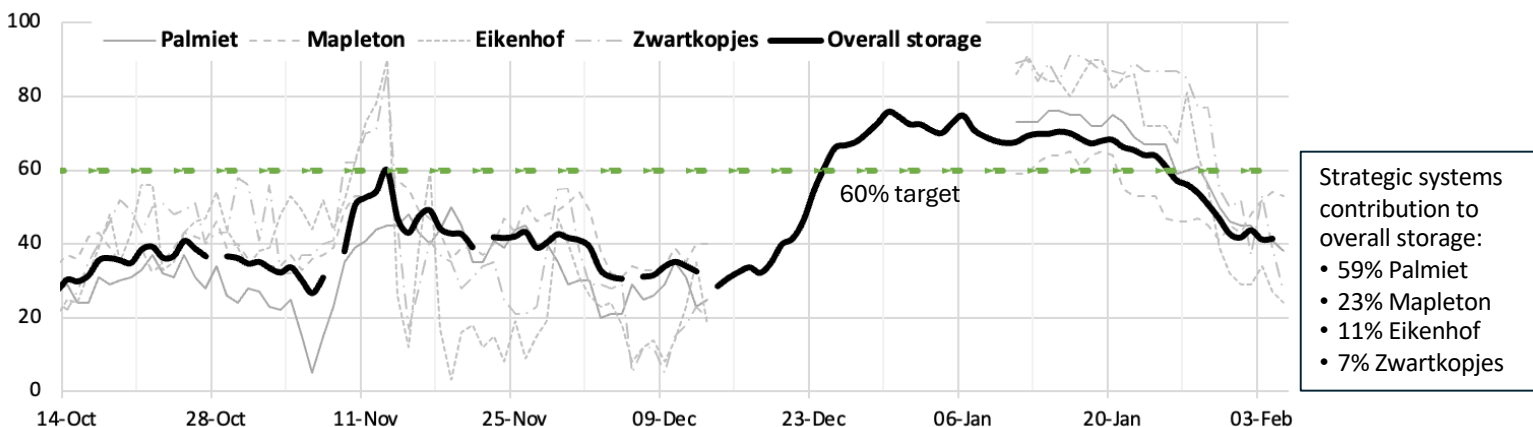
GAUTENG WATER SECURITY DASHBOARD

1. OVERALL WEEKLY CONSUMPTION / WATER USED FOR JOHANNESBURG, TSHWANE, EKURHULENI METROS & EMFULENI

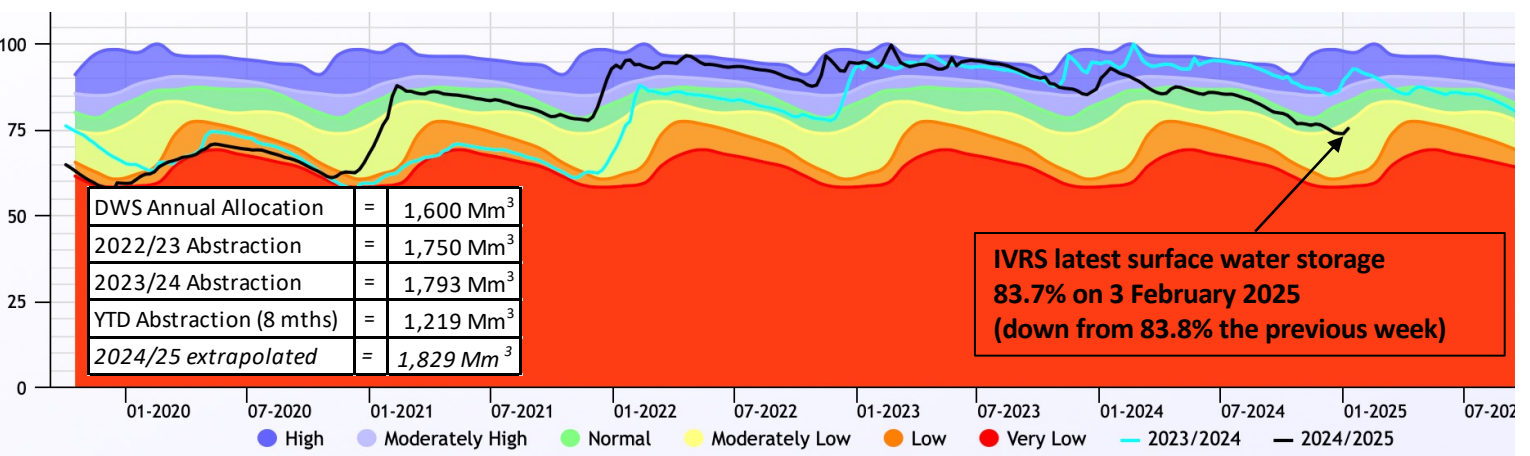


- MLD = millions of litres per day, the common measurement of total water use for cities
- WUE = Water use efficiency targets is the target demand that matches the licence conditions of Rand Water. This is shown as target demand in dotted lines. The three metros & Emfuleni comprise $\pm 90\%$ of the total Gauteng WUE target
- Weekly demand figures are from Rand Water meter readings on 3 February 2025. Demand increased in all metro municipalities. All major users are exceeding their Project 1600 WUE targets and combined use has increased to **21%** above target in the previous week.

2. % OF WATER STORAGE IN THE 4 MAIN STRATEGIC RAND WATER RESERVOIRS: The overall target reservoir storage level is 60% (green dotted line), at which point the system has sufficient pressure to feed the entire area. When overall storage exceeds 60%, water outages are less likely. With many business shutting down for the holidays, storage levels exceeded 60% between 24 December and 25 January. With hot, dry weather and economic activity, overall storage has again fallen below 60% with lower pressures and increased outages.



3. IVRS SYSTEM STATUS – 5-year combined surface water storage



- The 5-year Vaal Major system storage is shown as an indication that it is tracking lower than in the previous 3 years. DWS Restrictions are implemented on the IVRS when dam levels are below 60% at the beginning of the hydrological year starting in May of each year. Should over-abstraction continue, and rainfall be lower than normal, the DWS model is likely to indicate that restrictions be imposed in May 2025. The Vaal dam level has decreased from **61.3% to 61.7%** in the past week. Sources: <https://www.dws.gov.za/niwis2/SurfaceWaterStorage> and <https://www.dws.gov.za/Hydrology/Weekly/RiverSystems.aspx?river=IV>
- The weekly weather forecast shows warm weather across Gauteng with rain forecast for much the next week.
- All water users are urged to use water sparingly; to refrain from using tap water to irrigate gardens, wash down hard-surfaces etc.